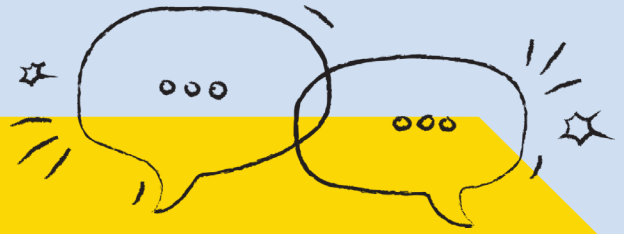


CHECK YOUR ASSUMPTIONS



These questions will help you think about your assumptions when engaging with young people to improve outcomes.

Do I assume young people see me as...?

- ☐ An authority figure? If so, how can I make our interactions more collaborative?
- ☐ Approachable? What makes me seem approachable or unapproachable (like my outfit, the room setup, or the agenda)?

Do I assume young people aren't interested?

- ☐ Do I think they won't care about the topic? How can I connect the issue to their interests and values?
- ☐ Do I think they are interested and that facilitating will be easy? How can I check their interest before the meeting? What tools do I have if they aren't engaging? Have I given them enough information beforehand?

Do I assume I know the impacts of this policy on young people?

- ☐ Do I think I understand their experiences already? How can I make sure I'm really listening to them? How will I combine what I learn with other information I have?
- ☐ Do I think this policy affects all young people the same way? How can I respect their unique perspectives?